



Make it easy – all the way around!

Constant flow with LENO™ MSV-BD balancing valve.



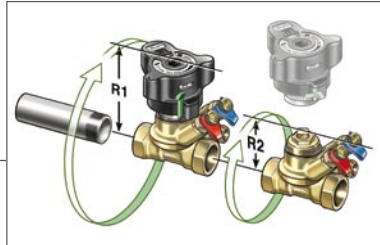
Life is challenging for all of us. Projects to complete, deadlines to meet, and customers to satisfy. That is why Danfoss has asked its engineers to look at a manual balancing

valve and design the best product imaginable. The result is the LENO™ MSV-BD. It offers many possibilities to make your daily job easier and more effective.

LENO™ MSV-BD is designed with you in mind

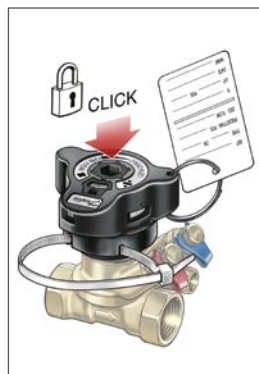
1. Easy mounting

Space inside buildings is money. The LENO™ is very compact and the handle is easy to remove so you need very little room for the installation. Conventional balancing valves need to be mounted in straight pipe to ensure accurate measurement. The LENO™ can be placed anywhere, for example just after an elbow, without influencing its accuracy.



2. Easy and accurate measuring

LENO™ has measuring nipples on a measuring station so they are always accessible. The digital scale is also readable from all angles. Furthermore, the precision of the valve is independent of the setting and much more precise than competing solutions. Danfoss also introduces a high-tech measuring device. The PFM4000 allows you to carry out the measurements with either Bluetooth or wireless technology which saves a lot of time.



3. Easy set point locking

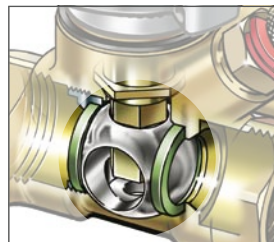
A simple tap on the top of the handle is enough to lock the LENO's setting. For more convenience we ship the LENO™ MSV-BD with a green disposable key for unlocking. Simply press the green latch and the valve is unlocked.

To make LENO™ tamper-proof a plastic tie-wrap (accessory) can be inserted, making it easily visible when the valve has been tampered with.



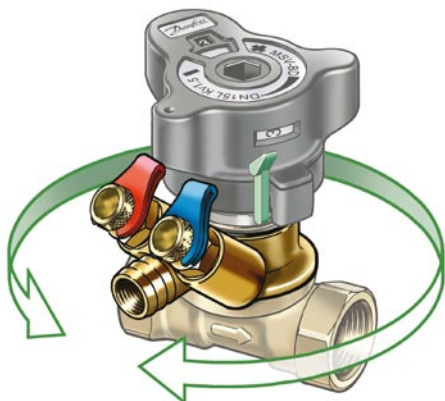
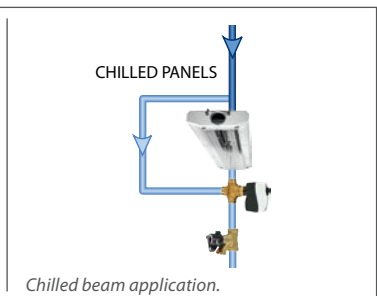
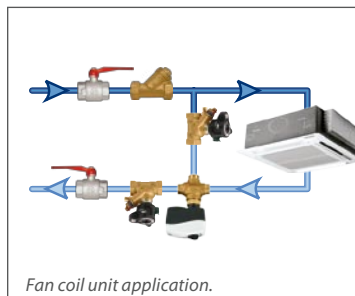
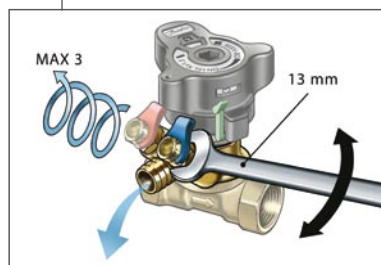
4. Easy shut-off function

When the LENO™ MSV-BD is locked, the valve becomes a ball valve. This feature has several advantages: The valve has zero leakage, opening and closing the valve is much easier because it takes only a quarter turn and closing the valve will not influence the setting in any way because the setting mechanism and the shut-off mechanism are completely separate. The position of the LENO™ (open or closed) is clearly shown by a red indicator.



5. Easy and practical draining

LENO™ MSV-BD has a built-in drain tap. To drain you can turn one of the measuring nipples with a 13 mm spanner. When the LENO™ is closed, you can even choose from which side of the valve you want to drain by selecting the appropriate measuring nipple, saving you the expense of mounting additional drain taps.



LENO™ MSV-BD valve with internal thread

Type	K _{vs} (m ³ /h)	Connection	Code No.
MSV-BD DN 15 LF	2.5	R _p 1/2"	003Z4000
MSV-BD DN 15	3.0	R _p 1/2"	003Z4001
MSV-BD DN 20	6.6	R _p 3/4"	003Z4002
MSV-BD DN 25	9.5	R _p 1"	003Z4003
MSV-BD DN 32	18	R _p 1 1/4"	003Z4004
MSV-BD DN 40	26	R _p 1 1/2"	003Z4005
MSV-BD DN 50	40	R _p 2"	003Z4006

LENO™ MSV-BD valve with external thread

Type	K _{vs} (m ³ /h)	Connection	Code No.
MSV-BD DN 15 LF	2.5	G 3/4 A**	003Z4100
MSV-BD DN 15	3.0	G 3/4 A**	003Z4101
MSV-BD DN 20	6.6	G 1 A	003Z4102

All LENO™ MSV-BD valves are made of DZR, corrosion resistant brass. ** Eurocone DIN V 3838

More info at leno.danfoss.com

Danfoss can accept no responsibility for possible errors in catalogues, brochures and other printed material. Danfoss reserves the right to alter its products without notice. This also applies to products already on order provided that such alterations can be made without consequential changes being necessary in specifications already agreed. All trademarks in this material are property of the respective companies. Danfoss and the Danfoss logotype are trademarks of Danfoss A/S. All rights reserved.