

H 22

Indirect substation for apartment houses and small properties

District heating substation for indirect heating and with connections for hot water boiler. Designed for wall-mounting.

Application

The H22 is a substation featuring high performance and simple operation. The H 22 is made in a compact design and supplies small properties and apartment houses comprising 2-16 apartments with heating.

District heating (DH)

The substation is prefabricated with interconnecting components such as differential pressure control, actuator, valve, fitting piece and sensor pockets for insertion of a heat meter, as well as strainers, ball valves and pockets for pressure gauges.

Heating (HE)

The heating side consists of a stainless steel plate heat exchanger, safety valve, manometer, air valve, connection for expansion vessel, circulation pump and is controlled

by electronic temperature controller with outdoor temperature sensor. Depending on substation's application different heat exchangers dimensioned for central or floor heating can be used.

Domestic hot water (DHW)

The substation is supplied with connection pipes for boiler on supply line. The H22 can be supplied with electronic temperature controller for boiler as an option.

Construction

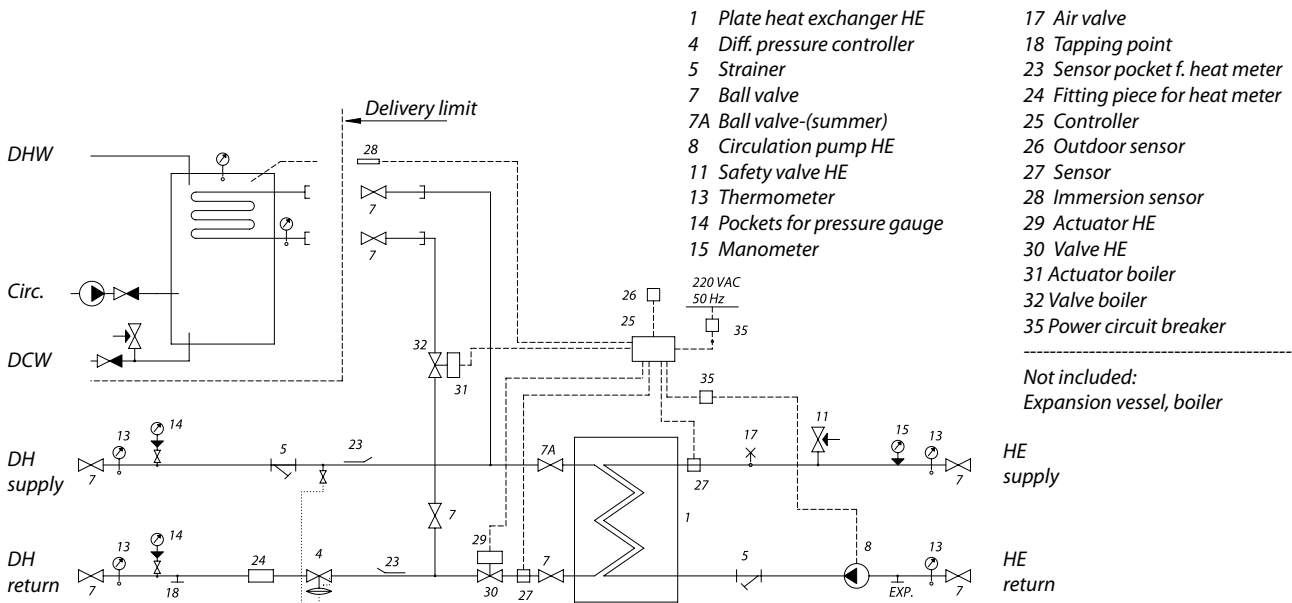
All pipes are made of stainless steel. The connections are made by nuts and gaskets. The H22 can be delivered with a white-lacquered steel sheet cover.

FEATURES AND BENEFITS

- Substation for apartment houses
- Indirect heating, connection for domestic hot water boiler on supply line
- Electronic regulation of heating (HE) temperature
- Capacity: 61 kW heating
- Minimum space required for installation
- Pipes and plate heat exchanger made of stainless steel

H 22

Circuit diagram - example



Technical parameters:

Nominal pressure: PN 16
 DH supply temperature: $T_{max} = 120^{\circ}C$
 DH differential pressure: $\Delta p_{min} = 0,5 \text{ bar}$
 Chloride compounds: Max. 300 mg/l

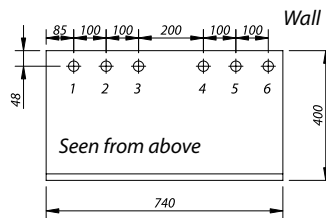
Weight incl. cover: Max. 90,0 kg (incl. packing)

Cover: White-lacquered steel sheet

Electrical supply: 230 V AC

Dimensions (mm):
 Without cover:
 H 1100 x W 720 x D 360

With cover:
 H 1100 x W 740 x D 400



Connections:
 1 District heating (DH) return
 2 District heating (DH) supply
 3 Boiler (DHW) return
 4 Boiler (DHW) supply
 5 Heating (HE) return
 6 Heating (HE) supply

Connections sizes:

DH: G 1" (int. thread)
 HE: G 1" (int. thread)
 DHW boiler: G 3/4" (int. thread)

Options:

- With connections for boiler
- With connections for boiler incl. automatic controller for DHW
- With cover

Heating: Capacity examples

Heating Capacity kW	Plate heat exchanger	Heating circuit Primary °C	Heating circuit Secondary °C	Pressure loss Primary *bar	Flow rate Primary l/h
43	2R-30	70/38	35/60	0,42	1270
50	2R-30	80/40	35/70	0,36	1084
58	2R-30	90/42	40/70	0,34	1048
61	2R-42	70/38	35/60	0,49	1649
78	2R-42	80/40	35/70	0,52	1696
82	2R-42	90/42	40/70	0,39	1472

* Heat meter not incl.

Danfoss Redan A/S · District Heating Controls · Sindalsvej 33-35 · DK-8240 Risskov · Denmark
 Phone: +45 87 43 89 43 · Fax: +45 87 43 89 44 · redan@danfoss.com · www.redan.danfoss.dk

Danfoss can accept no responsibility for possible errors in catalogues, brochures and other printed material. Danfoss reserves the right to alter its products without notice. This also applies to products already on order provided that such alterations can be made without subsequential changes being necessary in specifications already agreed. All trademarks in this material are property of the respective companies. Danfoss and the Danfoss logotype are trademarks of Danfoss A/S. All rights reserved.